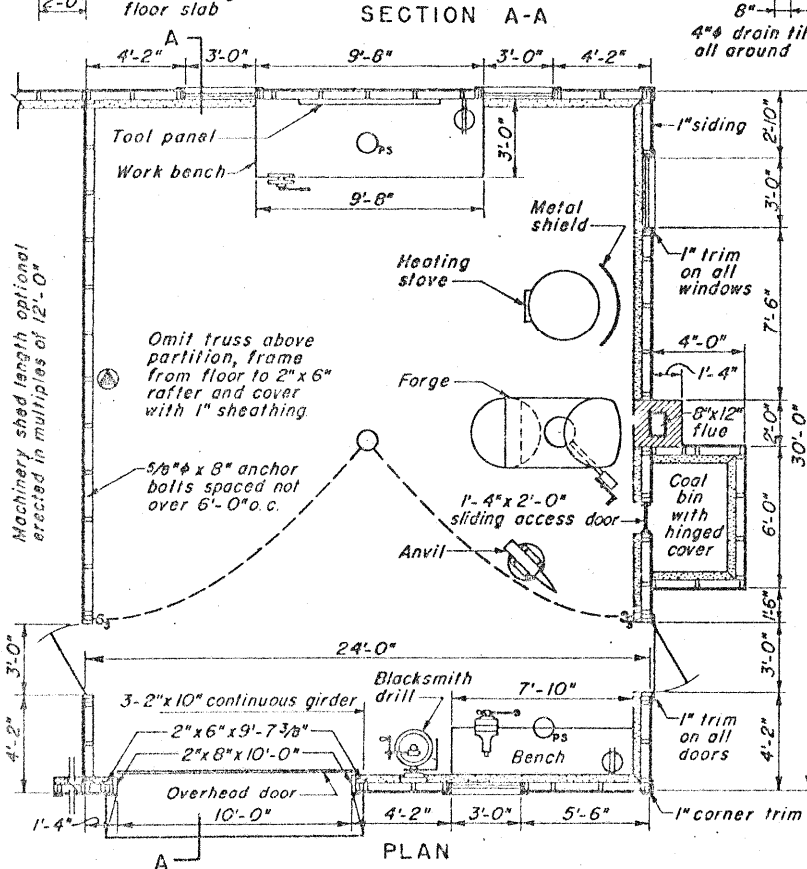
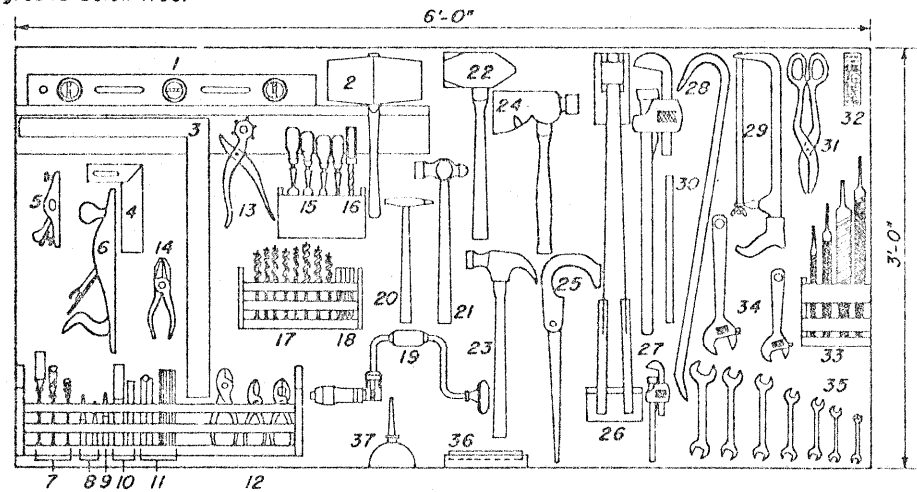


PERSPECTIVE



SECTION A-A

PLAN



TOOL PANEL

- 1- Level
- 2- Mallet
- 3- Steel square
- 4- Try-square
- 5- Block plane
- 6- Jack plane
- 7- Screw drivers
- 8- Drift punches
- 9- Center punch
- 10- Cold chisels
- 11- Rules
- 12- Pliers
- 13- Leather punch
- 14- Electrician's pliers
- 15- Wood chisels
- 16- Automatic drill
- 17- Auger bits
- 18- Nail sets
- 19- Brace
- 20- Tack hammer
- 21- Machinist's hammer
- 22- Five-pound hammer
- 23- Claw hammer
- 24- Hatchet
- 25- Compass saw
- 26- Saws (cross cut and rip)
- 27- Pipe wrenches
- 28- Wrecking bar
- 29- Hack saw
- 30- Blades (hack saw)
- 31- Tin snips
- 32- File cleaner (wire brush)
- 33- Files
- 34- Crescent wrenches
- 35- End wrenches
- 36- Oil stone
- 37- Oil can

COOPERATIVE EXTENSION WORK IN AGRICULTURE AND HOME ECONOMICS		
AND UNITED STATES DEPARTMENT OF AGRICULTURE COOPERATING		
FARM SHOP FRAME CONSTRUCTION		
N.J. REV. 49	EX. 5146	SHEET 1 OF 1

Note:

This archival plan is provided as a study plan only and may not be suitable for construction without modification, and may not be appropriate for all locales. Code officials and other authorities should always be consulted before any construction is attempted.