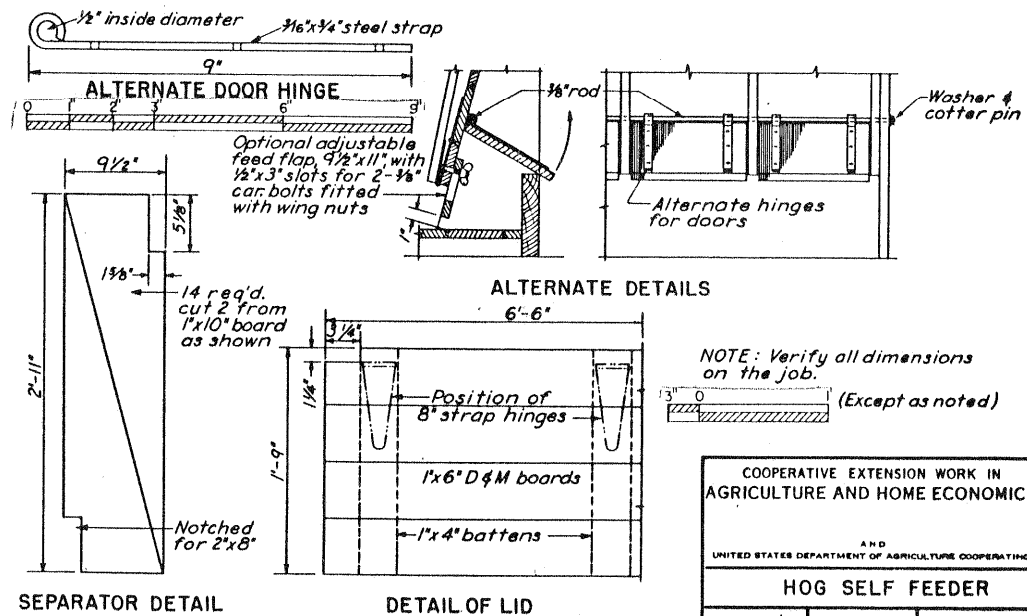


BILL OF MATERIALS
(Does not include alternates)

Item	Description	Quantity
Side stringers	2"x8"x12'-0"	1
Floor joists	2"x4"x10'-0"	1
Ridge & ridge blocks	2"x4"x8'-0"	1
Roof boards	1"x6"x14'-0" D&M	5
Flooring & side boards	1"x6"x6'-0" D&M	17
Doors	1"x10"x12'-0"	1
End boards & separators	1"x10"x12'-0"	4
Agitator, lower member	1"x6"x12'-0"	1
Center feed divider	1"x6"x6'-0"	1
Ridge cap	1"x6"x14'-0"	1
Center feed divider	1"x4"x6'-0"	1
Battens	1"x4"x10'-0"	1
Nailing strips, rafters & ties	1"x4"x12'-0"	2
Agitators, vertical member	1"x4"x14'-0"	2
Cover strip, & of floor	1"x3"x6'-0"	1
Hinges (with screws) for lid	8' strap (offset)	4
" " " " doors	4" "	24
" " " " agitators	4" "	36
Metal ridge roll	To suit	6 ft.
" door covering	26 ga. g.i. or equal	12 sq.ft.
Roofing	Slate-surfaced roll roofing or metal	28 sq.ft. approx.
Nails (approx. as shown, plus roofing nails & misc. larger nails)	6d galvanized 8d	3 3/4 lbs. 3/4"
Wire ties	Heavy	20 ft.



NOTE: Verify all dimensions on the job.
(Except as noted)

COOPERATIVE EXTENSION WORK IN
AGRICULTURE AND HOME ECONOMICS

A. H. D.
UNITED STATES DEPARTMENT OF AGRICULTURE COOPERATING

HOG SELF FEEDER

U.S.D.A. 48 EX. 5682 SHEET 1 OF 1

SEPARATOR DETAIL DETAIL OF LID

This dwg. based on Midwest plan EX 5383

Note: This archival plan is provided as a study plan only and may not be suitable for construction without modification, and may not be appropriate for all locales. Code officials and other authorities should always be consulted before any construction is attempted.