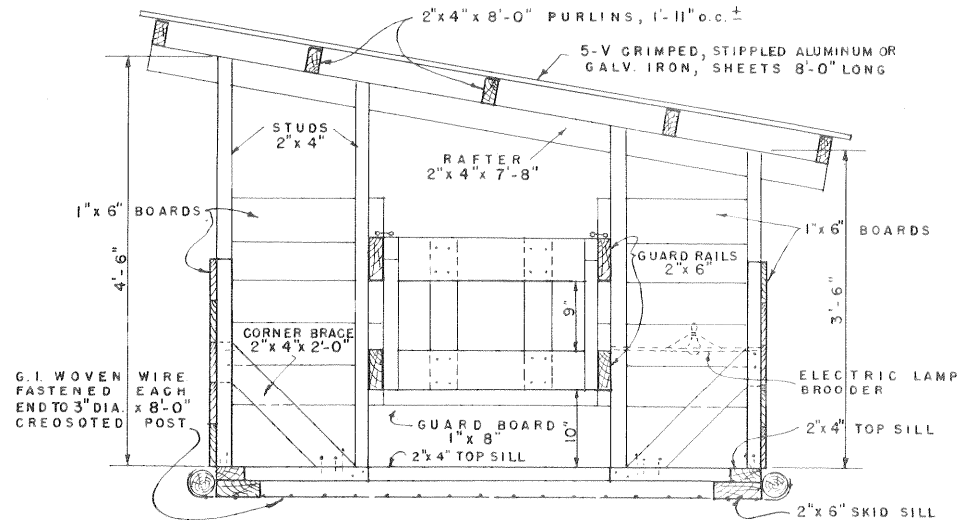
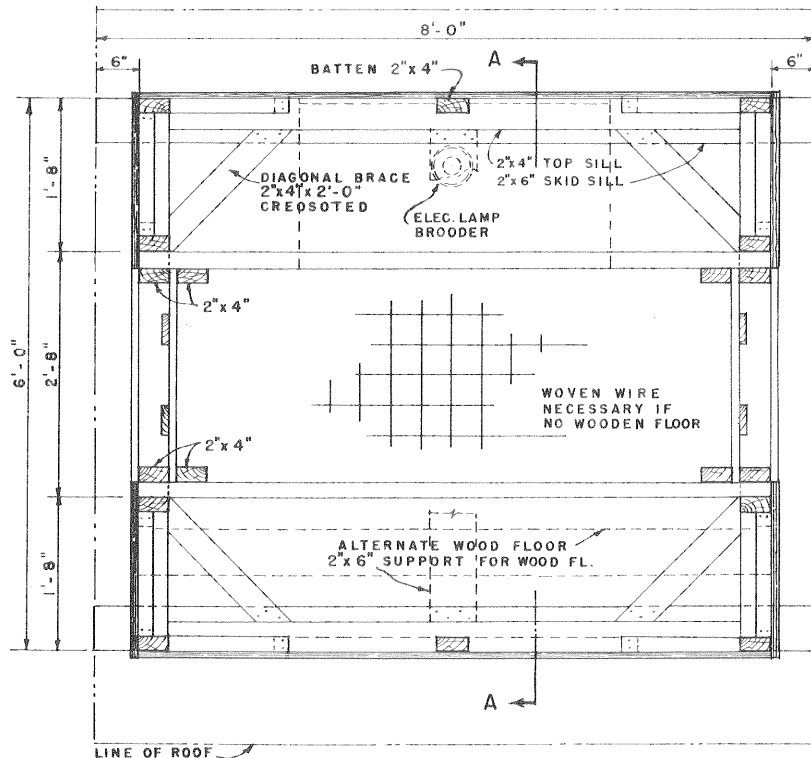


PERSPECTIVE

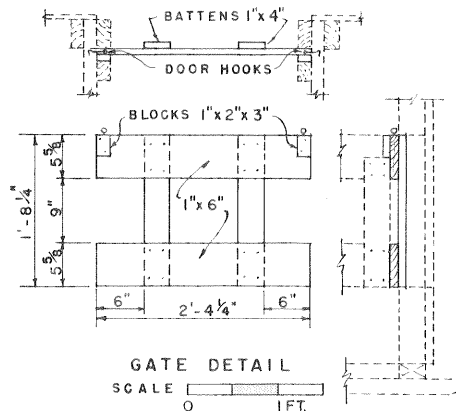


SECTION A-A



PLAN

SCALE 0 1 FT.



LIST OF MATERIALS

CREOSOTED LUMBER - UN-DRESSED

- 2 PCS. 2"x6"x8'-0" SKID SILLS
- 1 PC. 2"x4"x14'-0" TOP SILL
- 1 PC. 2"x4"x12'-0" TOP SILL
- 8 PCS. 2"x4"x8'-0" STUDS-BRACING-BATTENS
- 2 EA. 3" DIA. x 8" LONG POSTS (FLOOR-WIRE ANCHORS)

OTHER LUMBER, D4-S, PENTA. TREATED

- 2 PCS. 2"x6"x14'-0" GUARD RAILS
- 9 PCS. 2"x4"x8'-0" RAFTERS, PURLINS AND GATE GUIDES
- 1 PC. 1"x8"x12'-0" GUARD BOARDS
- 5 PCS. 1"x6"x14'-0" FRONT & REAR WALLS
- 5 PCS. 1"x6"x10'-0" END WALL & GATE
- 1 PC. 1"x4"x8'-0" GATE BATTENS

ROOF

- 4 PCS. 2'x8'x5-V CRIMPED, STIPPLED ALUMINUM OR GALVANIZED IRON ROOFING
- 2 LBS. 1 3/4" LEAD COATED ROOFING NAILS

MISCELLANEOUS

- BROODER 1-150 W ELECTRIC LAMP-WIRING TO HOUSE AS REQUIRED.
- NEW OR USED HOG WIRE TO TIGHTLY COVER FLOOR.
- 1/2 LB. GALVANIZED WIRE STAPLES.
- 4 SETS HEAVY-DUTY DOOR HOOKS AND EYES
- COMMON NAILS - AS REQUIRED.

NOTE :-

IF ALTERNATE WOODEN FLOOR IS PREFERRED, A 2"x6" CREOSOTED SUPPORT IS REQUIRED FOR THE 1" ROUGH FLOORING. FLOORING TO BE TREATED WITH PENTA OR D4-S

FRESHLY TREATED LUMBER IS USUALLY TOXIC TO ANIMALS. ALLOW TIME FOR EXCESS OIL BASE TO EVAPORATE.

COOPERATIVE EXTENSION WORK IN-
 AGRICULTURE AND HOME ECONOMICS
 DEPARTMENT OF AGRICULTURAL ENGINEERING
 Univ. of Connecticut
 UNITED STATES DEPARTMENT OF AGRICULTURE COOPERATING

INDIVIDUAL HOG BROODER HOUSE

GA. '56 EX. 5771 SHEET 1 OF 1

Note:

This archival plan is provided as a **study plan** only and may not be suitable for construction without modification, and may not be appropriate for all locales. Code officials and other authorities should always be consulted before any construction is attempted.