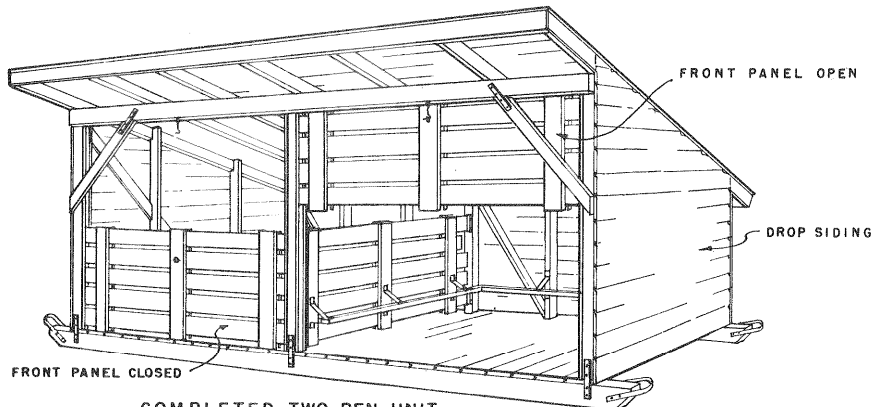
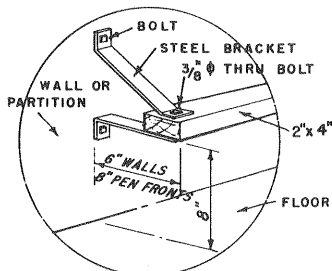


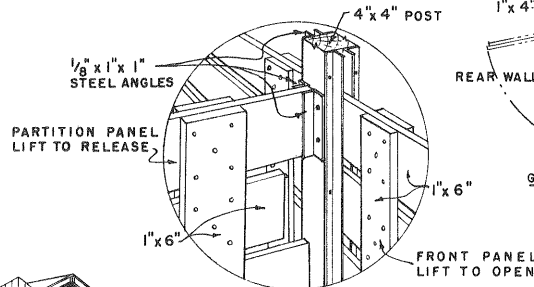
PERSPECTIVE OF FRAMING



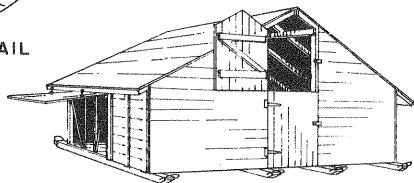
COMPLETED TWO-PEN UNIT
SHOWING OPERATION OF FRONT PANELS



GUARD RAIL DETAIL



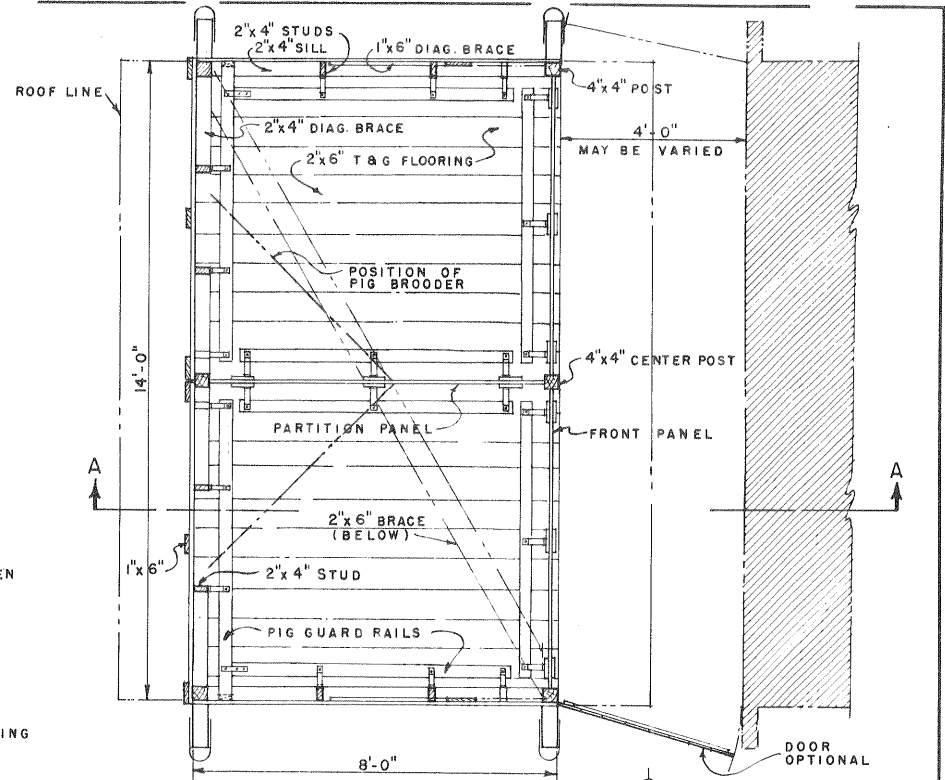
CENTER POST DETAIL



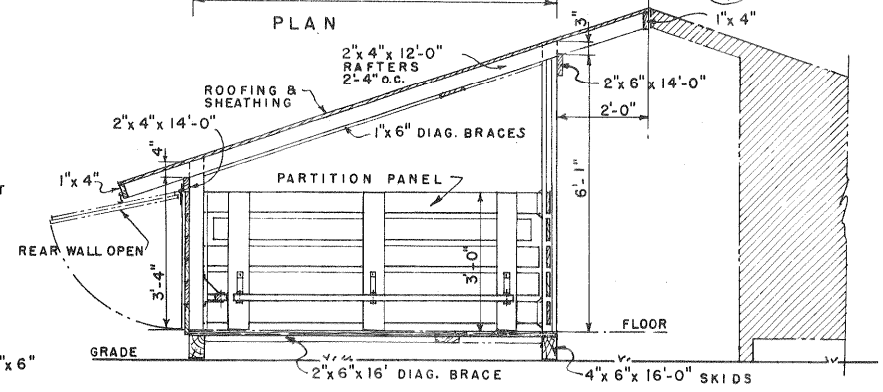
TWO UNIT FOUR-PEN HOUSE

Note:

This archival plan is provided as a **study plan** only and may not be suitable for construction without modification, and may not be appropriate for all locales. Code officials and other authorities should always be consulted before any construction is attempted.



PLAN



SECTION A-A

SCALE: 0 1 2 3 FT.

NOTE: USE 55# WIDE SELVAGE ROLL ROOFING OVER SOLID SHEATHING, OR CORRUGATED METAL ROOFING OVER 1"x6" NAILING STRIPS SPACED ACCORDING TO MANUFACTURER'S RECOMMENDATIONS.

SKIDS SHOULD BE PRESSURE-TREATED WITH PRESERVATIVE.

FOR DETAILS OF ELECTRIC PIG BROODERS, SEE PLAN NO. 5788

COOPERATIVE EXTENSION WORK IN AGRICULTURE AND HOME ECONOMICS DEPARTMENT OF AGRICULTURAL ENGINEERING Univ. of Connecticut		
AND UNITED STATES DEPARTMENT OF AGRICULTURE COOPERATING		
MOVABLE HOG HOUSE (TWO-PEN 8'x14' UNIT)		
USDA '54	EX. 5787	SHEET 1 OF 1