

This archival plan is provided as a study plan only and may not be suitable for construction without modification, and may not be appropriate for all locales. Code officials and other authorities should always be consulted before any construction is attempted.

BILL OF MATERIALS SMOKEHOUSE

CONCRETE 1:3:5 mix

10 bags cement, 1 cu yd. sand, 1/2 cu yd. gravel

LUMBER

- 3 pieces 2" x 6" x 6'-0" cross ties
 - 3 " 2" x 4" x 12'-0" header, bench or
 - 12 " 2" x 4" x 10'-0" sills, studs
 - 23 " 2" x 4" x 8'-0" " " plates, door hangers
 - 2 " 1" x 10" x 8'-0" bench and vent doors
 - 2 " 1" x 6" x 10'-0" ridge and trim
 - 2 " 1" x 6" x 7'-0" door baffens
 - 6 " 1" x 4" x 10'-0" corner boards and trim
 - 6 " 1" x 4" x 8'-0" trim
 - 6 " 1" x 6" x 7'-0" T & G boards for door
- 275 ft B.M. 6" drop siding
120 ft B.M. roof sheathing
Roofing or asphalt shingles to cover 100 sq. ft. roof area
- #### MISCELLANEOUS
- 7-1/2" x 12" anchor bolts, with nuts and washers
 - 1 pair 8" Tee hinges, 1 safety hasp
 - 2-pair 2" x 2" hinges for vent doors
 - 1-piece metal flashing-6" x 40"
 - 4 lin. ft. #30-mesh wire screen-10" wide
 - 4 lengths 6" T.C. sewer pipe, 1-6" 90° T.C. elbow
- Nails, hanging hooks, and paint not included

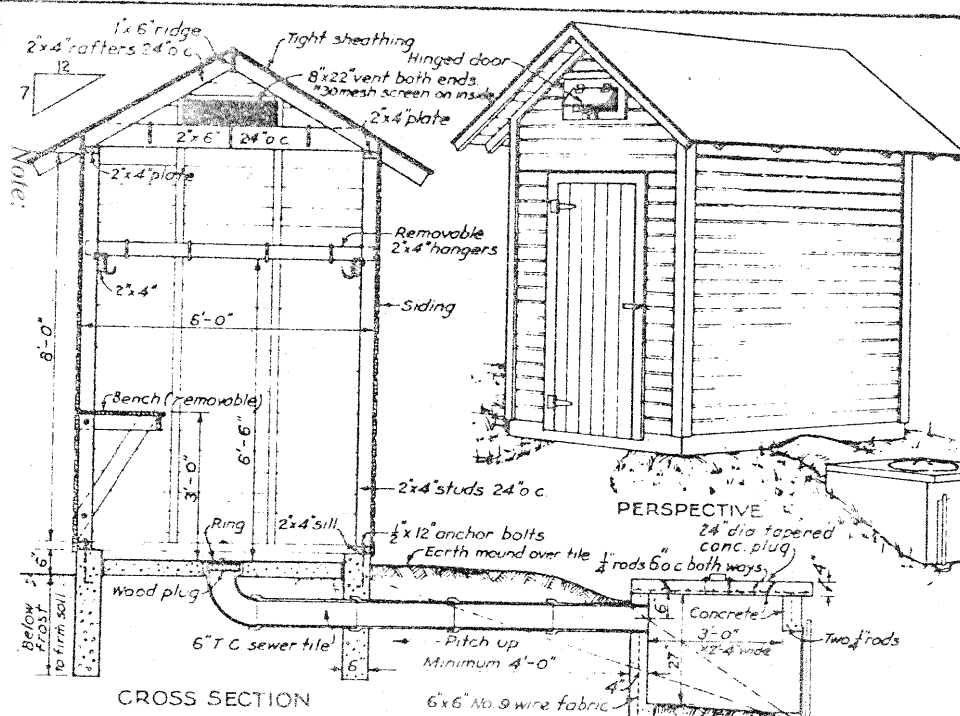
FIREBOX

CONCRETE 1:2:3 mix

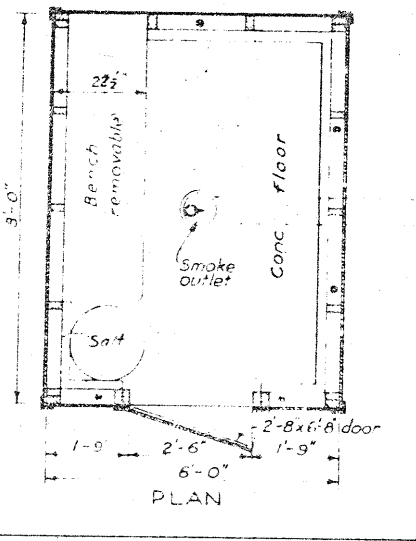
6 bags cement, 1/2 cu yd. sand, 1/3 cu yd. broken hard brick, gravel or stone, (brick more heat resistant)

MISCELLANEOUS

- 10 lin. ft. 6" x 6" No. 9 wire fabric 30" wide
- 6 pieces 1/2" steel rods 42" long
- 10 " " " " " " 32" "
- 2 " 1/2" pipe 36" long
- 1-piece 24" x 32" metal, sliding door



CROSS SECTION



PLAN

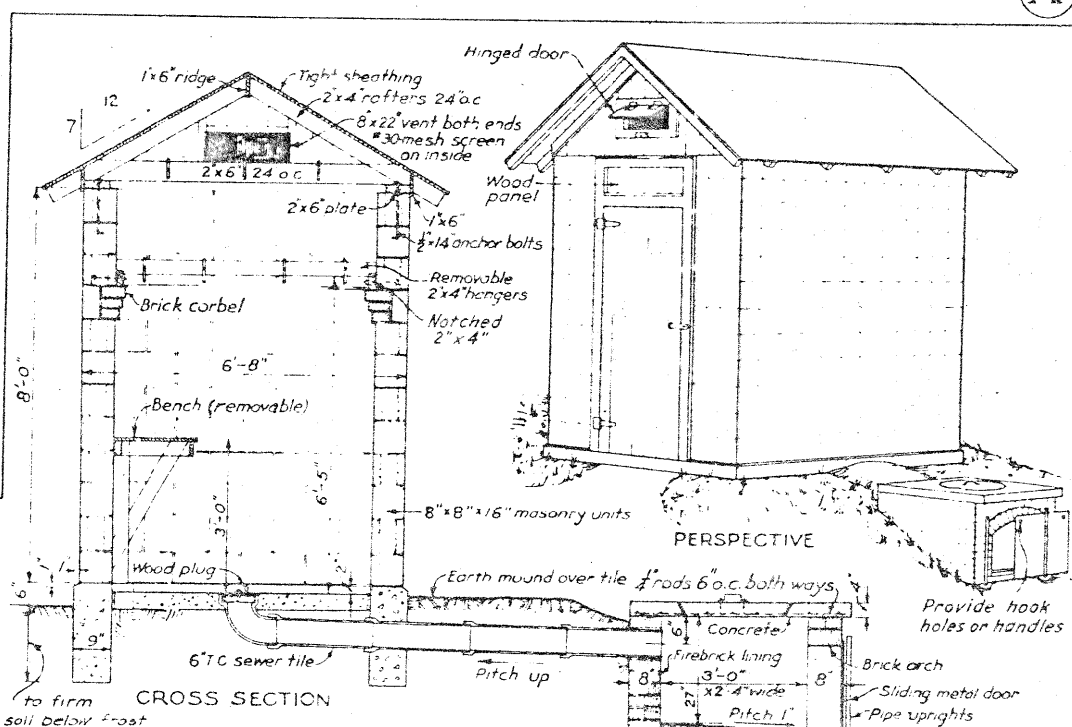
BILL OF MATERIALS SMOKEHOUSE

- CONCRETE AND MORTAR
Concrete 1:3:5 mix Mortar 1:3+10% lime
14 bags cement, 1/2 cu yd. sand, 2 cu yd. gravel
65 lbs hydrated lime
- 142 8" x 8" x 16" smooth face masonry units.
 - 12 8" x 4" x 16" " " " "
 - 2 8" x 4" x 8" " " " "
 - 14 8" x 8" x 8" " " half "
 - 52 8" x 8" x 16" " " corner "
 - 12 8" x 8" x 16" " " jamb "
 - 12 8" x 8" x 8" " " half "
- 100 common brick

- #### LUMBER
- 4 pieces 2" x 6" x 8'-0" plates and door jambs
 - 6 " 2" x 6" x 7'-0" " " cross ties
 - 6 " 2" x 4" x 10'-0" rafters, gable-end studs
 - 7 " 2" x 4" x 6'-0" bench and removable hangers
 - 1 " 2" x 3" x 8'-0" door casing
 - 1 " 1" x 6" x 10'-0" baffens, ridge, trim
 - 1 " 1" x 4" x 10'-0" trim
 - 1 " 1" x 12" x 6'-0" bench
 - 1 " 1" x 10" x 10'-0" " and vent doors.
- 120 ft B.M. roof sheathing 56 ft B.M. 1" x 6" T & G door, gables.
Roofing or asphalt shingles to cover 100 sq. ft. roof area
- #### MISCELLANEOUS
- 8-1/2" x 14" anchor bolts, 1 pr 8" Tee hinges, 1 pr 2" x 2" hinges.
 - 6 x 38" metal flashing 4 lin. ft. #30-mesh screen 10" wide
 - 1 Nails, hanging hooks, and paint not included

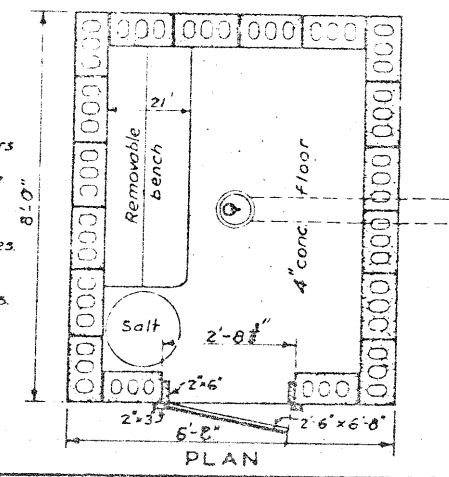
FIREBOX

- 7 bags cement, 1/2 cu yd. sand, 1/3 cu yd. gravel
- 450 common brick, 90 firebrick
- 9-1/2 steel rods 40" long, 6-1/2 steel rods 48" long
- 2 pieces 1/2" pipe 36" long
- 1 metal sliding door 24" x 32"



CROSS SECTION

PERSPECTIVE



PLAN

COOPERATIVE EXTENSION WORK IN
AGRICULTURE AND HOME ECONOMICS

UNITED STATES DEPARTMENT OF AGRICULTURE COOPERATING

SMOKE HOUSE

USDA '65 EX. 5695 SHEET 1 OF 1

A

B